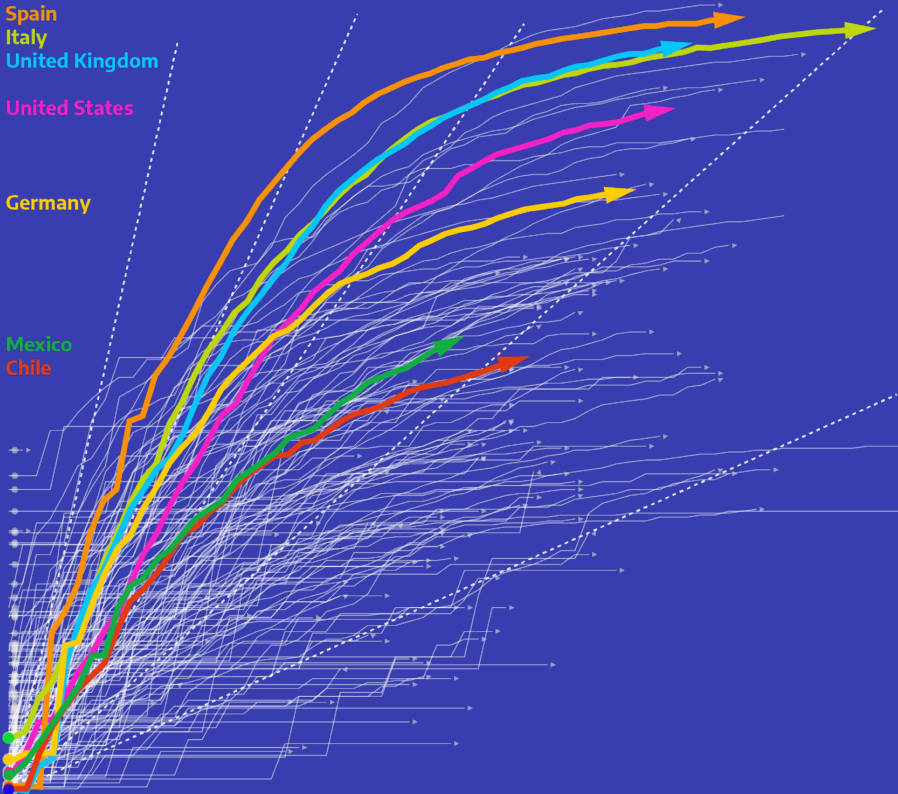


Spain  
Italy  
United Kingdom

United States

Germany

Mexico  
Chile



American Planning Association  
APA California Northern Section

PLANRED  
Red de Planificadores de Chile

# PROGRAM

**COVID CONVERSATIONS  
CALIFORNIA | CHILE + GERMANY**  
Planning Issues, Questions, and Responses

Zoom meeting link  
[t.ly/eWIK](https://t.ly/eWIK)

Friday – May 22, 2020  
9AM PDT | 12PM EDT | 12:00 CLT

# PROGRAM





# COVID CONVERSATIONS: CALIFORNIA | CHILE + GERMANY

## Planning Issues, Questions, and Responses

May 22, 2020 Agenda

9:00 am – 10:50 am PDT / 12:00 pm – 13:50 pm CLT

- 9:00 / 12:00 **Welcome | Introductions | Overview – APA & PLANRED – Highlights in USA, California, Chile, Europe**  
Roberto Moris, David Silva, Hing Wong, and Alex Hinds
- 9:20 / 12:20 **Outlook for Chile**  
Roberto Moris
- 9:30 / 12:30 **State of California: Housing, Strategic Growth, Planning Law, General Plan Guidelines, Economic Recovery**  
Suzanne Hague
- 9:40 / 12:40 **Conversations based on questions from the audience**
- 9:50 / 12:50 **Planners4Health – Disproportionate Impacts to People of Color, Elderly, Poor**  
Miguel Angel Vazquez
- 10:00 / 13:00 **Planners4Health – Healthy Eating, Active Living**  
Diana Benitez
- 10:10 / 13:10 **Conversations based on questions from the audience**
- 10:20 / 13:20 **Lessons from PLANRED's international conversations**  
David Silva
- 10:25 / 13:25 **Outlook for Germany**  
Paola Alfaro
- 10:35 / 13:35 **Conversations based on questions from the audience**
- 10:45 / 13:45 **Closing Comments**

# COVID CONVERSATIONS: CALIFORNIA | CHILE + GERMANY

## Planning Issues, Questions, and Responses

### IDEA AND GOALS

The idea of **COVID CONVERSATIONS** follows the experience of #COVIDCalls organized by Scott Knowles of Drexel University and then the **COVID CONVERSATIONS** organized by PLANRED with experts from different countries. To date, sessions have been held with Italy, Mexico, the United Kingdom, and Germany.

The main objective of **COVID CONVERSACIONES** is to learn about the diverse experiences of this global crisis connecting people from different latitudes in understanding the COVID-19 phenomenon and its urban consequences.

The collaboration between the APA California Northern Section and PLANRED allows us to broaden the spectrum of professionals and experts in the urban environment, reflecting on impacts and public policy decisions in the current context.

### FORMAT

The speakers answer a series of triggering questions from the interviewer. In the meantime, Zoom meeting participants ask their questions through chat. Video, audio, and chat are recorded as part of this collective reflection and learning process.

### PARTICIPANTS

APA and PLANRED invited the speakers and all who are interested in participating in this open and transforming experience.

# COVID CONVERSATIONS: CALIFORNIA | CHILE + GERMANY

## Planning Issues, Questions, and Responses

### DURING THE VIDEO CONFERENCE

The hosts welcome and introduce guests/speakers briefly, and then mention the rules to the participants.

Speakers present their experience based on triggering questions with freedom of focus, emphasis and add depth during their allotted time.

Participants make their comments and questions through chat. Comments can be open to everyone or private between participants and the hosts. The hosts select the questions for the speakers.

Time permitting, some chat participants may also be able to speak.

The official session is recorded and then shared in audio and video format through the mailing list and at [www.covidconversaciones.cl](http://www.covidconversaciones.cl).

Questions and comments to Alex Hinds ([alexhindsmarin@icloud.com](mailto:alexhindsmarin@icloud.com)) and Roberto Moris ([rmoris@uc.cl](mailto:rmoris@uc.cl)).

## Suzanne Hague, AICP

Former Deputy Director for Planning and Community Development  
California Governor's Office of Planning and Research (OPR)  
Sacramento, California



Your job encompasses a wide range of issues ranging from statewide housing and community development strategies to working with a variety of state, regional, and local governments on local hazards and disasters.

- Briefly, what does OPR do and how does COVID-19 affect housing, transportation, and land use planning?
- What are your greatest fears and hopes regarding the current pandemic in California?
- What are some specific roles and responsibilities planners should be undertaking to help our communities successfully adapt to the new normal?

## Miguel Angel Vazquez, AICP

Planners4Health Lead  
APA California  
Riverside, California



As a certified planner working for a public health department and Planners4Health coordinator, you are concerned with a wide range of issues that have been amplified by the COVID-19 crisis.

- How has the COVID-19 crisis disproportionately impacted people of color, the elderly, and the poor?
- What are your greatest fears and hopes regarding the current pandemic in California?
- What are some specific roles and responsibilities planners should be undertaking to help our communities successfully adapt to the new normal?

## Diana Benitez

Intermediate Planner  
Raimi + Associates  
Oakland, California



As a professional consultant and Planners4Health coordinator, you are concerned with a wide range of issues that have been amplified by the COVID-19 crisis.

- Can you provide examples applicable to the intersection of social equity, health and access to food, outdoor recreation and housing?
- What are some specific roles and responsibilities planners should be undertaking to help our communities successfully adapt to the new normal?

## Paola Alfaro

Urban Research and Design Laboratory (U-Lab)  
Technische Universität Berlin



Representing the rest of the speakers who participated in the meeting on April 17 (Lorena Valdivia, Alvaro Valera and Vicente Sandoval) would like to know their vision regarding the German experience with COVID.

- Tell us about the evolution of the crisis in Germany. Is it possible to define phases and lessons?
- As planners what role are we currently playing and could we play as planning discipline (built environment discipline) in the context of pandemic?

# COVID CONVERSATIONS: CALIFORNIA | CHILE + GERMANY

## Planning Issues, Questions, and Responses

### American Planning Association (APA)



The American Planning Association (APA) provides leadership in the development of vital communities for all by advocating excellence in planning, promoting education and resident empowerment, and providing APA members with the tools and support necessary to meet the challenges of growth and change. The mission is to create great communities for all. APA advances planning through leadership in education, research, advocacy, and ethical practice. APA has over 40,000 members in over 90 countries. APA California is the largest APA chapter with 6,000 members.

### Red de Planificadores de Chile (PLANRED)



This Chilean organization constituted by people from diverse professional and academic backgrounds who practice and value urban planning and planning. PLANRED is a space for integration of all those who are interested in urban and territorial development.

The main objective of the Chilean Planners Network is to actively contribute both to the creation and promotion of knowledge and the advancement of reflection and the generation of urban public policy proposals.



## Planning Issues, Questions, and Responses

### Alex Hinds



Alex was a USA Fulbright recipient in Ecuador who went on to serve as director of planning and community development-related agencies for over 24 years in Marin, San Luis Obispo, and Lake counties. He led the trend setting *2007 Marin Countywide Plan Update* and related sustainability program that received top California and United States awards. Alex currently serves as an International Director for APA California Northern Section. In that capacity, he co-authored *Purposeful Travel: A Planners Toolkit for Initiating International Collaboration*. Recent international projects include organizing presentations to the municipal government of São Paulo, Brazil on regional governance and planning practices as well as public outreach and capacity building in Ouro Preto, Brazil. Alex continues to teach classes at Sonoma State University and serves as a senior consultant for their Center for Sustainable Communities, where he works with faculty, students and others assisting local communities. Alex is a member of the California Planning Roundtable and a former President of the California County Planning Directors Association. Alex received a BA at the University of Hawaii in Liberal Studies focused on applied ecology, and a Master degree in Social Science from United States International University specializing in cross-cultural community environmental management.

### Hing Wong, AICP



Hing is a former President of the California Chapter of the American Planning Association (APA California). Hing is currently the Vice President of the California Planning Foundation, which raises money for planning student scholarships. He is also an International Director of APA California Northern Section where he organizes educational international planning tours. Recent tours include Eastern Europe and Southeast Asia, and a tour is being planned for The Middle East. Hing worked at the Association of Bay Area Governments (ABAG) and the Metropolitan Transportation Commission (MTC) for over three decades on regional and sub-regional planning issues in the San Francisco Bay Area. Projects included Plan Bay Area/Sustainable Communities Strategy, developing the Regional Housing Need Allocation (RHNA) methodology, analyzing and forecasting data for the ABAG Projections document, and preparing regional reports on housing, land use, and transportation issues. Hing also teaches graduate planning courses at San José State University on geographic analysis, planning policies, and quantitative methodology. Hing received a Bachelor in Geography: Urban/Economics at UC Berkeley and a Master in Urban and Regional Planning at San José State University.

## Planning Issues, Questions, and Responses

### David Silva



Lawyer with a master's and doctoral degree in planning at University College London, and a master's degree from both the Universities of Chile and the Catholic University of Chile. He has developed most of his professional career in the public sphere such as consultant for the National Commission for the Environment, lawyer in the Recoleta Municipality, in the Higher Education Council, in the Ministry of Planning (currently Ministry of Social Development), in the Ministry of Housing and Urban Planning and as Head of Cabinet in the Superintendency of the Environment. He also served as Councilor of the Providencia Municipality. He has been a lecturer at the Adolfo Ibáñez University, at the Diego Portales University and at the Catholic University, among others. He currently practices the profession at Correa & Silva Abogados and is President of the Chilean Planners Network, PlanRed.

### Roberto Moris



He is an architect of the Pontifical Catholic University of Chile, Master in City Design and Social Sciences of the London School of Economics, and Ph.D. student in Civil Engineering from the University of Granada. He is an expert on integrated planning, carrying capacity models, sustainability, and resilience. He has worked with the UNDP, World Bank, and IADB. He was Technical Secretary of the Cities and Territory Ministers Committee and National Director of Urban Projects at the Chilean Ministry of Housing and Urban Development. He was responsible for the creation of the first Urban Planning academic program in Chile and the founder of the Chilean Planners Network. He is a professor at the School of Architecture and the Institute of Urban and Territorial Studies. He was Principal Investigator of the National Research Center for Integrated Risk Management, Director of Cities Observatory UC, and the Plans and Urban Projects Program UC. He is co-founder of the Chilean Planners Network. His research has focused on developing instruments to assist decision-making through methodologies and management models that integrate people into common objectives.

## Planning Issues, Questions, and Responses

### Suzanne Hague, AICP



Suzanne is the Deputy Director for Planning and Community Development for the California Governor's Office of Planning and Research. She leads, coordinates, and supports policy development related to land use and sustainable, equitable growth; housing, transportation, and infrastructure; infill development and finance; local and regional planning; community-based investment; and social and racial equity. Suzanne has over two decades of experience working at the neighborhood, local, state, and national levels. With professional background in the fields of social work and architecture, Suzanne cut her teeth as a planner in post-Hurricane-Katrina New Orleans, later led a national advocacy coalition for federal funds to support neighborhood revitalization, and served in the Obama White House's Strong Cities, Strong Communities initiative – a national pilot program supporting economic revitalization in cities. Suzanne holds a Master of Urban Planning from Harvard University and is a member of the American Institute of Certified Planners and the California Planning Roundtable.

### Miguel Angel Vazquez, AICP



Miguel is one of the first certified planners hired by a public health department in the nation. His role at the Riverside University Health System-Public Health is to strengthen the integration of planning and health through collaboration with non-traditional partners. He currently serves as co-chair of the Riverside County Healthy City Network and co-chair of the Riverside County Active Transportation Network. His professional memberships include the American Planning Association (APA), American Institute of Certified Planners (AICP), the California Planning Roundtable (CPR), and Planners4Health California. For nearly 20 years, he has provided professional planning and community development services to the private, public, and military sectors. Miguel's work product, creativity and advocacy has been recognized with awards from the American Planning Association at the national, state and local levels – including the 2018 APA President's Award for his work on diversity and inclusion within the profession. Miguel received a bachelor's degree in Urban Studies and Planning from California State University, Northridge and he is a fellow of the California Leadership Academy for the Public's Health.

## Planning Issues, Questions, and Responses

### Diana Benitez



Diana is an Intermediate Planner at Raimi + Associates. She is also the Planners4Health Coordinator for the Northern Section of APA California. Diana conducts research, engagement, analysis, and visualization to address disparities and create healthy, affordable, and safe communities. Her research contributions have included greenhouse gas reductions, student equity need indices, early care and education, health equity and racial disparities analyses. She previously worked as a Research and Data Analyst at Advancement Project California, a next generation civil rights organization. Diana received a Master in Urban and Regional Planning from UCLA Luskin School of Public Affairs with a focus in community economic development and the intersection of the built environment and health. She received her Bachelor of Arts in Urban and Regional Planning and a minor in Geographic Information Sciences from California University Northridge.

### Paola Alfaro D'Alencon



Architect and holds doctoral degree in urban studies. She is funding member of the Urban Research and Design Laboratory (U-Lab, release 2012) at the Technische Universität Berlin, awarded with the “Label Nationale Stadtentwicklung” from the Federal Institute for Research on Building, Urban Affairs and Spatial Development in Germany, visiting professor at the Dipartimento di Scienze per l’Architettura, Università degli Studi di Genova since 2016 for urban design and theory. Beside several urban research and design practices in the Berlin based U-Lab studio (office since 2014) she has also work experiences for national and international organizations in consultancy for urban governance processes and climate change frameworks. She has been part of the official European delegation at the Habitat III Conference in Quito for and sustainable planning and urban governance. She is co-author of several publications as Ephemere Stadtentwicklung (DOM Publisher Berlin, 2016) and co-editor of the recently finished publication “Emergent Urban Spaces – A Planetary Perspective”, The Urban Book Series, Springer Verlag, London, Berlin.

## Planning Issues, Questions, and Responses German Speakers' Experience

**Paola Alfaro-d'Alençon** Dr.-Ing. –Arch. doctoral degree in urban studies. Deutsche Forschungsgemeinschaft (DFG)-Research Fellow, associate Professor to the TU-Berlin. Funding member of the Urban Research and Design Laboratory (U-Lab, release 2012) awarded with the “Label Nationale Stadtentwicklung” from the Federal Institute for Research on Building, Urban Affairs and Spatial Development in Germany. Urban design and theory visiting professor at Dipartimento di Scienze per l'Architettura, Università degli Studi di Genova since 2016. Experience in urban research and design practices at Berlin based U-Lab studio (2014). National and international consulting for urban governance processes and climate change frameworks. Member of the official European delegation at the Habitat III Conference in Quito for and sustainable planning and urban governance. Commissioned to elaborate the German Bundestiftung Baukultur (Federal Building Culture Foundation) the German Baukultur Report 2020, where COVIT will be an issue to frame.

[dalencon@u-lab.de](mailto:dalencon@u-lab.de)

**Lorena Valdivia Steel** Dr.-Ing. - Architect, Pontificia Universidad Católica Chile (PUC). PhD (DAAD) at Technical University of Berlin (TU-B). Interim Professor of theory and history of architecture at the Bochum University of Applied Sciences (HSBO). The spectrum of their praxis ranges from regional construction practices to climate and heritage adapted construction methods. Experience in academic-participatory projects »Design-Build«, especially in Bolivia. Research team leader for “minimal sustainable architecture” at HSBO in cooperation with Ruhr University of Bochum. Senior researcher for “architectural workshop and typologies” chair Prof. Jacob van Rijns (TU-B). Scientific board member at “Scientists for Future” (DE-AT-CH).

[lorena.valdivia-steel@hs-bochum.de](mailto:lorena.valdivia-steel@hs-bochum.de)

**Alvaro Valera Sosa** Dipl Ing Arch MScPH - Architect, Universidad Central de Venezuela 2002. Master's in international public health, Charité Medical University Berlin, Germany where he has lived since 2009. Researcher at the Architecture for Health Dept., Technical University of Berlin 2011 - 2018. Since 2018, he performs functions as: (i) Organization manager and founder of the [Building Health Lab](#), Germany; (ii) Researcher for ENAH, the European Network Architecture for Health; (iii) Editor of the scientific journal Cities & Health and; (iv) Founding manager of the German chapter "Architects Declare Climate and Biodiversity Emergency".

[a.valera.sosa@buildinghealth.eu](mailto:a.valera.sosa@buildinghealth.eu)

**Vicente Sandoval** PhD - Research Associate at the Katastrophenforschungsstelle (Disaster Research Unit), Freie Universität Berlin. Consultant and researcher on Urban Disaster Risk Governance. PhD in Development Planning at the Bartlett Development Planning Unit (DPU), University College London (UCL), MSc. in Urban Management at Technische Universität Berlin (TU-Berlin), and Designer at Universidad Católica de Temuco (UC-Temuco), Chile. Editor of the Journal of Latin American Studies on Disaster Risk Reduction REDER.

[vicente.sandoval@fu-berlin.de](mailto:vicente.sandoval@fu-berlin.de)

# Roberto Moris

## Introduction



Known as the "Pale Blue Dot" photo, the original image showed Earth as a tiny speck within a band of brightness caused by sunlight striking the spacecraft's instrument. The photograph was the result of a campaign led by scientist **Carl Sagan** to **convince NASA to turn Voyager 1** around and take a photo of the planet where its story began. Just 34 minutes later, according to NASA, the spacecraft's camera shut down so the probe could save power.

## Pale Blue Dot

**We are all together on this**



# PANDEMIC REAL GLOBAL PHENOMENON URBAN PHENOMENON



Exception status  
Uncertainty  
Adaptation  
Vulnerability  
Inequality  
Governance  
Democracy  
Freedom  
Public services  
Multiscale impact

A REAL TIME CRISIS  
DYNAMIC LEARNING PROCESS

# WATCHING THE MODELS

Did this early...

Failed at this early on

Cheap

Measures (Non-Pharmaceutical Interventions, NPIs)		China	Singapore	South Korea	Taiwan	Italy	Spain	France	US	UK
Government	Authority from national CDCs, central coordination	Yes	Yes	Yes	Yes	Yes	Yes	Yes	No	Yes
	Declaring state of emergency	Yes	Yes	Yes	Yes	Yes	Yes	Yes	Yes	Yes
	Anonymized detailed information shared publicly to avoid speculation	Yes	Yes	Yes	Yes	No	Yes	Yes	No	Yes
Education	Educating population on Personal NPIs									
Detection & Isolation	Intensive testing	Yes	Yes	Yes	Yes	Yes	Yes	Yes	No	Yes
	Complementary detection methods	Yes	Yes	Yes	Yes	Yes	Yes	Yes	No	Yes
	Surveillance system (all suspicious deaths and illnesses)	Yes	Yes	Yes	Yes	Yes	Yes	Yes	No	Yes
	Drive-through testing stations	Yes	Yes	Yes	Yes	No	Yes	Yes	No	Yes
	Mobile apps to track interaction	Yes	Yes	Yes	Yes	No	Yes	Yes	No	Yes
	(Strict) Contact tracing	Yes	Yes	Yes	Yes	No	Yes	Yes	No	Yes
	Temperature and health screening (airports, stations etc)	Yes	Yes	Yes	Yes	Yes	Yes	Yes	Yes	Yes
	Mass fever screening (Thermal temperature scanners)	Yes	Yes	Yes	Yes	Yes	Yes	Yes	No	Yes
	Case isolation	Yes	Yes	Yes	Yes	Yes	Yes	Yes	Yes	Yes
	Household quarantine	Yes	Yes	Yes	Yes	Yes	Yes	Yes	No	Yes
Home isolation of suspect cases	Yes	Yes	Yes	Yes	Yes	Yes	Yes	Yes	Yes	
Home quarantine of those living in the same household as suspect cases	Yes	Yes	Yes	Yes	Yes	Yes	Yes	Yes	Yes	
Public Decontamination	Disinfection (transport, streets etc)									
	Hazardous waste management									
Healthcare Resources	Surge critical care bed capacity	Yes	Yes	Yes	Yes	No	No	No	No	No
	Providing supplies (soap, hand sanitizers, masks etc)	Yes	Yes	Yes	Yes	No	No	No	No	No
	Additional money for health professionals (MDs and nurses)	Yes	Yes	Yes	Yes	Yes	Yes	Yes	No	No
	Call for volunteers (among medical students)	Yes	Yes	Yes	Yes	Yes	Yes	Yes	Yes	No
Social distancing/Isolating cases	Social distancing of the elderly and others at most risk of severe disease	Yes	Yes	Yes	Yes	Yes	Yes	Yes	Yes	Yes
	Voluntary home quarantine	Yes	Yes	Yes	Yes	Yes	Yes	Yes	Yes	Yes
	Quarantine of particular (high risk) neighbourhoods	Yes	Yes	Yes	Yes	Yes	Yes	Yes	No	No
	Declaration for purpose to be outside in the city	Yes	Yes	Yes	Yes	Yes	Yes	Yes	No	No
Quarantine for returning residents and long-term pass holders	Yes	Yes	Yes	Yes	Yes	Yes	Yes	No	No	
Economics	Postponing some payments (bills, taxes) to avoid people having to go outside	Yes	Yes	Yes	Yes	Yes	Yes	Yes	Yes	No
	Quarantine Order Allowance Scheme (economic assistance)	Yes	Yes	Yes	Yes	Yes	Yes	Yes	No	No
	Extended medical leave for patients with respiratory symptoms	Yes	Yes	Yes	Yes	Yes	Yes	Yes	No	No
Travel Bans	Stopping non-essential travel (international)	No	Yes	No	Yes	Yes	Yes	Yes	Yes	Yes
	Entry restrictions on visitors from certain countries	Yes	Yes	Yes	Yes	Yes	Yes	Yes	Yes	Yes
	Closing borders	Yes	Yes	Yes	Yes	Yes	Yes	Yes	No	Yes
	Closing cities?	Yes	Yes	No	No	Yes	Yes	Yes	No	No
Closure	Closing all public schools	No	No	No	No	Yes	Yes	Yes	No	Yes
	Closing private schools and universities	Yes	Yes	Yes	No	Yes	Yes	Yes	Yes	Yes
	Closing churches	Yes	Yes	Yes	No	Yes	Yes	Yes	No	No
	Closing bars and other social venues	Yes	Yes	Yes	No	Yes	Yes	Yes	No	No
	Stopping mass gatherings >250	Yes	Yes	Yes	No	Yes	Yes	Yes	Yes	Yes
	Stopping mass gatherings >50	Yes	Yes	Yes	No	Yes	Yes	Yes	No	Yes
	Closure of all non-essential business	No	No	No	No	Yes	Yes	Yes	No	No

Have done little of this

Will eventually have to pay with this

...to avoid this

Forced to pay with this

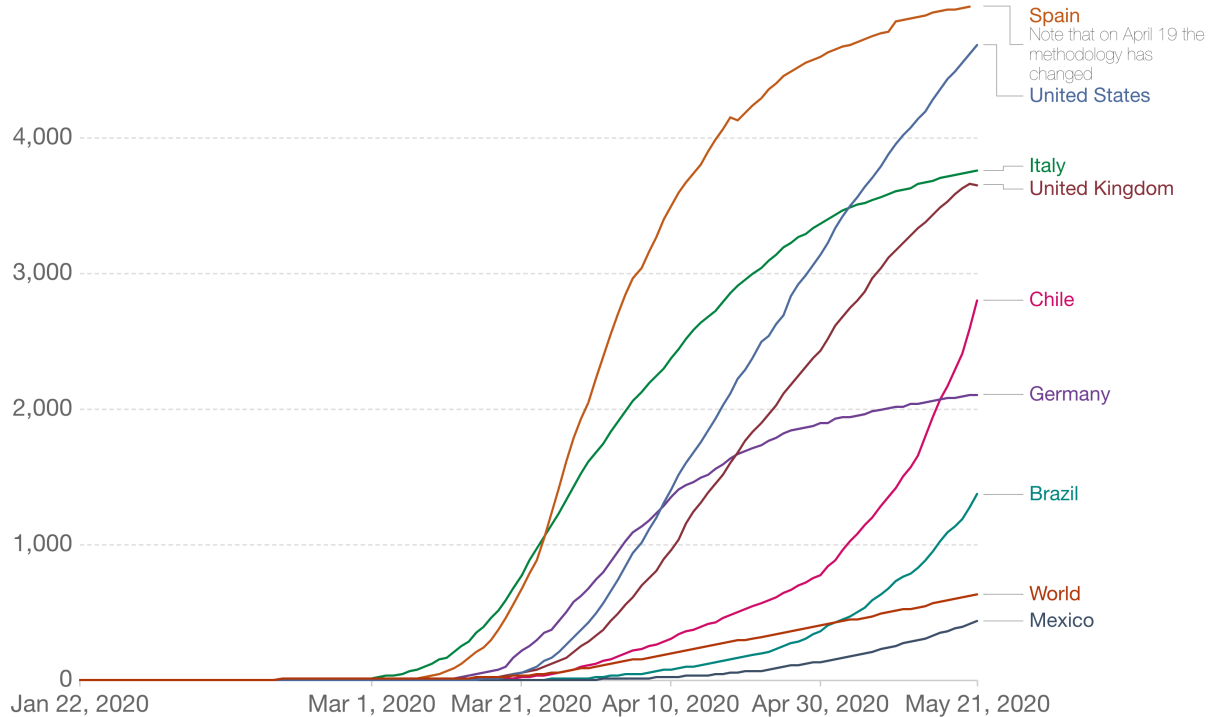
Expensive

# WATCHING THE CURVES

## Total confirmed COVID-19 cases per million people

The number of confirmed cases is lower than the number of total cases. The main reason for this is limited testing.

Our World  
in Data



Source: European CDC – Situation Update Worldwide – Last updated 21st May, 11:00 (London time) OurWorldInData.org/coronavirus • CC BY

# TIME, UNCERTAINTY AND FUTURE

Knowledge  
Experience  
Behaviour

Actions

Adaptation

Projections

Past

Present

Weeks

Years

Days

Months

Futures

Memories

Individual

Years

Scenarios

Collective

Decades

Short term

Mid term

Long term

Institutional

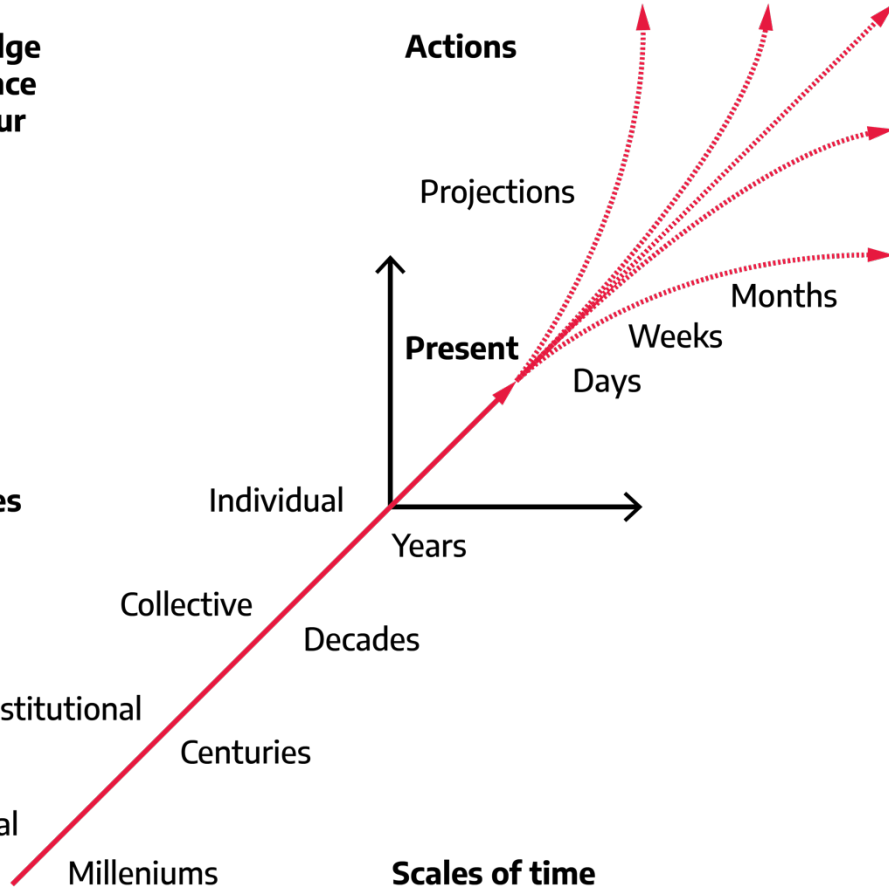
Centuries

Geological

Milleniums

Scales of time

New context





# SELECTING MEMORIES

## *Why Are There Almost No Memorials to the Flu of 1918?*

A restaurant owner in Vermont and a professor from New Zealand are among the few to commemorate the most lethal pandemic since the bubonic plague.



The 1918 flu memorial bench, center, in Hope Cemetery, in Barre, Vt. Caleb Kenna for The New York Times



Parade in Philadelphia on Sept. 28, 1918 (Source: New York Times)

# WWW.COVIDCONVERSACIONES.CL

**COVID CONVERSATIONS**  
Planning Issues, Questions, and Responses  
Open learning platform for uncertain times

**COVID CONVERSACIONES**  
Problemas de planificación, preguntas y respuestas  
Plataforma de aprendizaje abierta para tiempos inciertos

HOME BLOG PLANRED SESSIONS SPEAKERS COUNTRIES LINKS

**BLOG**

Americas cities were once engines of growth and opportunity.

**#COVID\_CONVERSACIONES | La experiencia italiana**  
Bianca Caravati & Cristina Visconti  
Jueves 26, marzo 2020 | 14:00 - 15:00 Chile

Únase a la reunión Zoom:  
<https://zoom.us/j/991830295>  
ID de reunión: 991 830 295

Invita PLANRED  
Red de Planificadores  
de Chile

**#COVID\_CONVERSACIONES | Experiencias en México**  
Domingo Arteaga, Myriam Urzua & Rodrigo Díaz  
Jueves 02, ABRIL 2020 | 14:00 - 15:20 UTC-3

Únase a la reunión Zoom:  
<https://zoom.us/j/438331195>  
ID de reunión: 438 331 195

Invita PLANRED  
Red de Planificadores  
de Chile

**#COVID\_CONVERSACIONES | Experiencias en Reino Unido**  
Bernardita Devilat, Camila Cocina & Juan Pablo Corral  
Miércoles 08, ABRIL 2020 | 14:00 - 15:20 UTC-4

Únase a la reunión Zoom a través  
de este formulario:  
<https://forms.gle/1N7D50SE>

Invita PLANRED  
Red de Planificadores  
de Chile

**#COVID\_CONVERSACIONES | Experiencias en Alemania**  
Paola Alfaro, Lorena Valdivia, Álvaro Valera & Vicente Sandoval  
Viernes 17, ABRIL 2020 | 12:00 - 13:20 UTC-4

Únase a la reunión Zoom a través  
de este formulario:  
<https://forms.gle/LYUgvgW>

Invita PLANRED  
Red de Planificadores  
de Chile

I am a planner because I am optimistic despite the facts  
Jeff Soule, FAICP

# David Silva

## Introduction



# PlanRed

## Red de Planificadores de Chile Chilean Planners Network



- This Chilean organization is formed by people from diverse professional and academic backgrounds who practice and value urban planning and planning
- PlanRed is an open invitation for integration of all those who are interested in urban and territorial development
- The main objective of the Chilean Planners Network (PlanRed) is to actively contribute both: the creation and promotion of knowledge and the advancement of reflection & the generation of urban public policy proposals



# PlanRed

## Red de Planificadores de Chile Chilean Planners Network



- PlanRed has held several meetings and seminars with enthusiast professionals and practitioners from all over the country
- We have more than one hundred members so far; all are very active in participating and generating new debates and partnership collaboration
- Our main goal is to reach as many people as possible connected either at the theoretical level and the implementation level to planning in Chile and overseas in order to improve our understanding and practice of planning

# Hing Wong Introduction



# American Planning Association

## California Chapter • Northern Section



American Planning Association  
**California Chapter Northern**

*Making Great Communities Happen*



# American Planning Association

- ❖ National association of city planners
- ❖ 40,000 APA members
- ❖ 6,000 members in California
- ❖ 2,000 members in the Northern Section



American Planning Association  
**California Chapter Northern**

*Making Great Communities Happen*





# International Planning Tours

## APA California Northern Tours

- Cuba (2003)
- China (2007)
- India (2009)
- Brazil (2012)
- Eastern Europe (2014)
  - Czech Republic
  - Serbia
  - Hungary
  - Poland
  - Estonia
  - Russia
- Southeast Asia (2017)
  - Singapore
  - Indonesia
  - Vietnam
  - Cambodia





# International Collaboration

- São Paulo, Brazil
  - Primarily Video Conferences
    - Regional Governance
    - Planning Practices
- Ouro Preto, Brazil
  - Primarily In-Person Meetings
    - Public Outreach
    - Capacity Building





# APA California Northern Section International Directors

Hing Wong, AICP | [hing@hingwong.info](mailto:hing@hingwong.info)

Alex Hinds | [alexhinds47@gmail.com](mailto:alexhinds47@gmail.com)



American Planning Association  
California Chapter Northern

*Making Great Communities Happen*

Photo credit: Samuel Blanchard

# Alex Hinds Introduction





# Death Toll Continues to Rise

## Top Stories

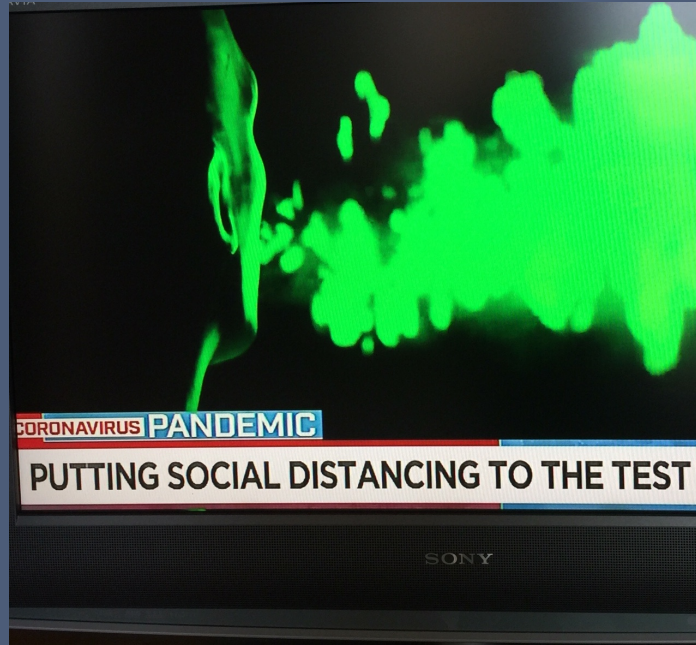


Los Angeles Times

**U.S. death toll in coronavirus outbreak surpasses 90,000**

Source: Los Angeles Times

# COVID-19 Highly Contagious



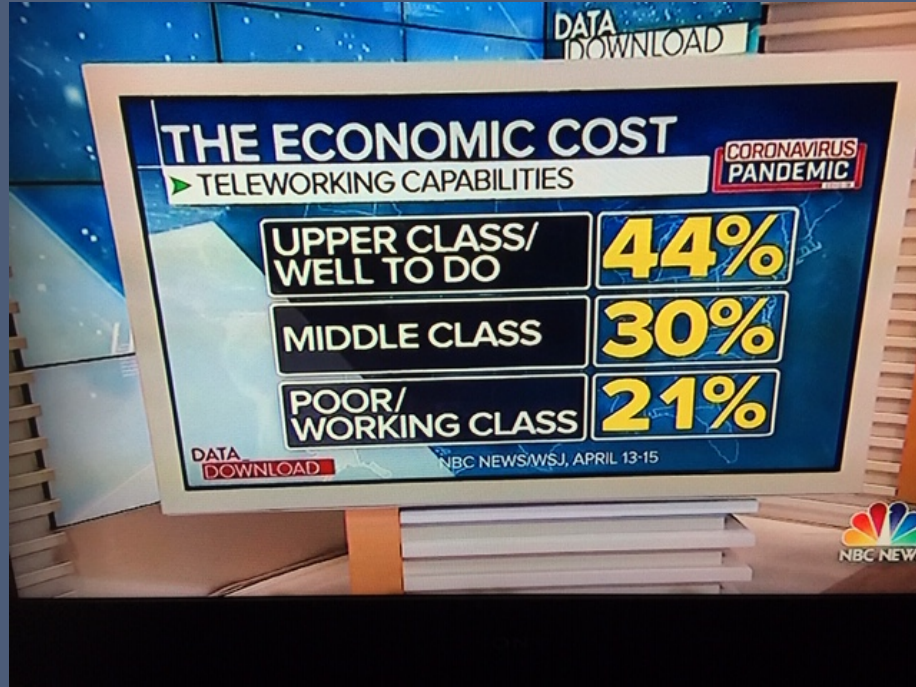
Source: KRON-TV

# Open For Business?



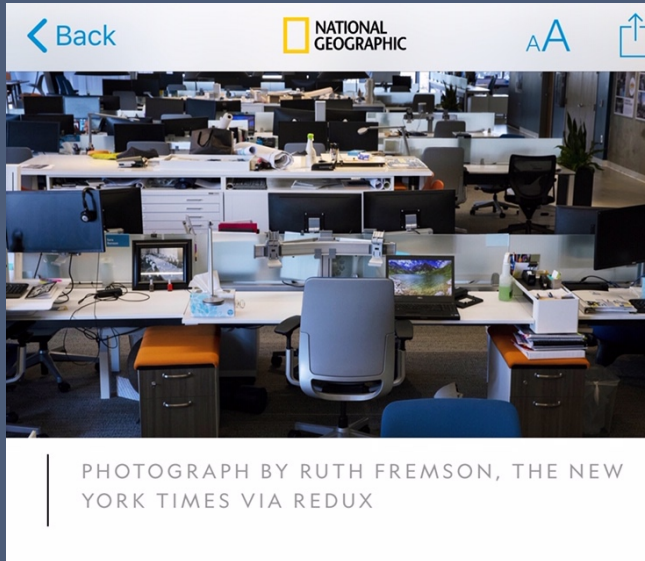
California State Capital, Sacramento

# Who Can Telecommute?



Sources: NBC News and Wall Street Journal

# No More Open Office Spaces?



| CORONAVIRUS COVERAGE |

## **Goodbye to open office spaces? How experts are rethinking the workplace.**

The coronavirus pandemic is exacerbating workers' worries about returning to jobs in these often debated floor plans.

Source: National Geographic



# Transit Oriented Development



Salesforce Tower and Transbay Terminal, San Francisco (photo by Hing Wong)

# Wasting Precious Food



**CORONAVIRUS PANDEMIC**

**REPORTS SAY USDA LET MILLIONS OF POUNDS OF PRODUCE  
ROT AS FOOD BANK DEMAND IS ON THE RISE**

Source: MSNBC

# Beach Protest



Los Angeles Times

**Raucous protest in Huntington Beach demands beaches open, end of stay-at-home order**

Huntington Beach, California



# Make America Healthy Again



Dr. Anthony Fauci and Dr. Deborah Birx

# Less Reliant on Fossil Fuel



Source: CBS

# Make Planet Healthy and Well



(photo by Alex Hinds)

# COVID CONVERSATIONS: CALIFORNIA | CHILE + GERMANY

## Planning Issues, Questions, and Responses

May 22, 2020 Agenda

9:00 am – 10:50 am PDT / 12:00 pm – 13:50 pm CLT

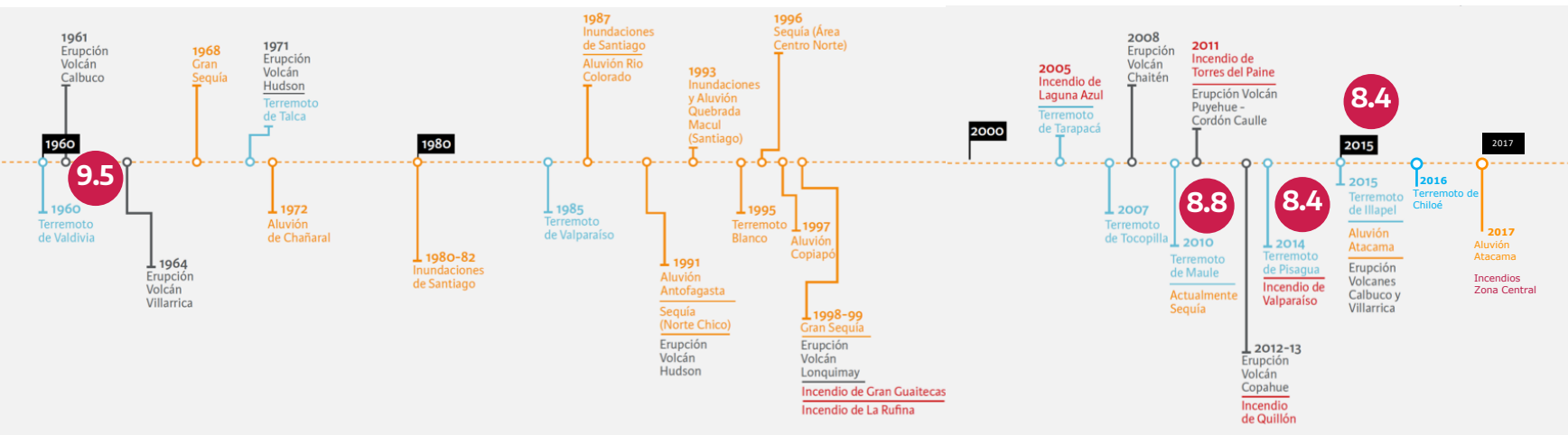
- 9:00 / 12:00 **Welcome | Introductions | Overview – APA & PLANRED – Highlights in USA, California, Chile, Europe**  
Roberto Moris, David Silva, Hing Wong, and Alex Hinds
- 9:20 / 12:20 **Outlook for Chile**  
Roberto Moris
- 9:30 / 12:30 **State of California: Housing, Strategic Growth, Planning Law, General Plan Guidelines, Economic Recovery**  
Suzanne Hague
- 9:40 / 12:40 **Conversations based on questions from the audience**
- 9:50 / 12:50 **Planners4Health – Disproportionate Impacts to People of Color, Elderly, Poor**  
Miguel Angel Vazquez
- 10:00 / 13:00 **Planners4Health – Healthy Eating, Active Living**  
Diana Benitez
- 10:10 / 13:10 **Conversations based on questions from the audience**
- 10:20 / 13:20 **Lessons from PLANRED's international conversations**  
David Silva
- 10:25 / 13:25 **Outlook for Germany**  
Paola Alfaro
- 10:35 / 13:35 **Conversations based on questions from the audience**
- 10:45 / 13:45 **Closing Comments**

# Roberto Moris

## Outlook for Chile



# HIGH RECURRENCE AND DIVERSITY OF EVENTS



**18 events in 12 years**

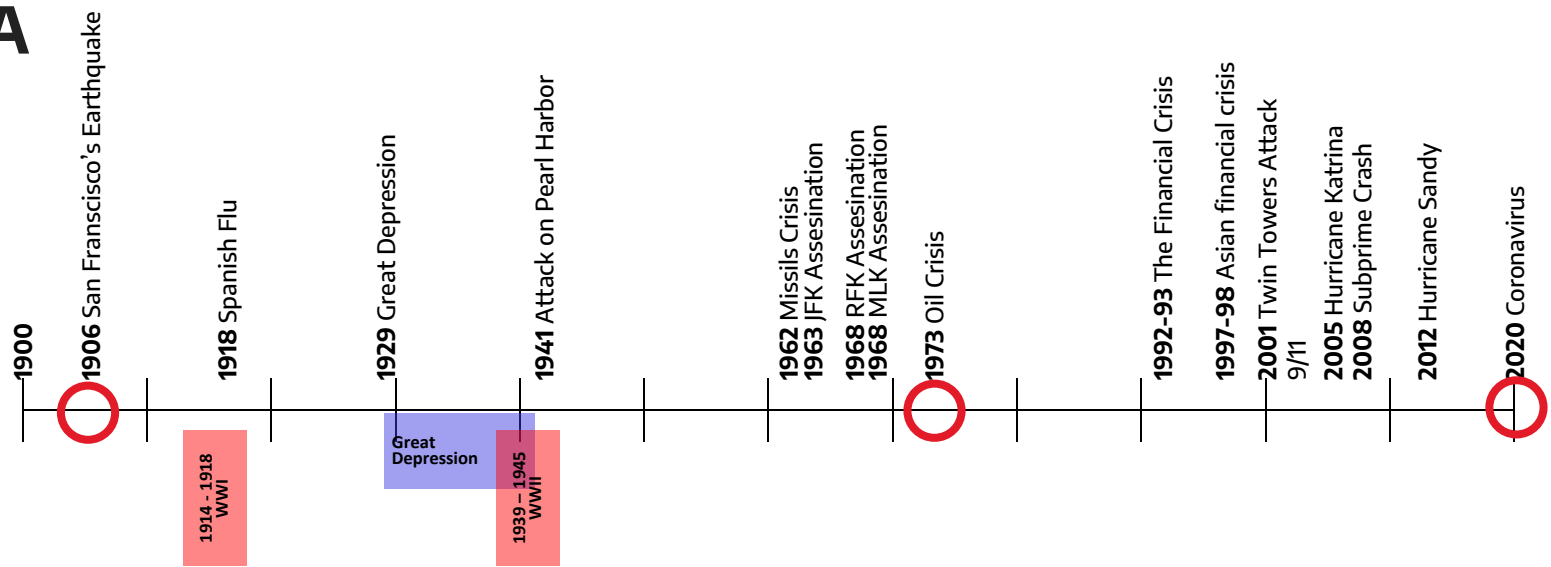
Earthquakes

Severe Climate Phenomena

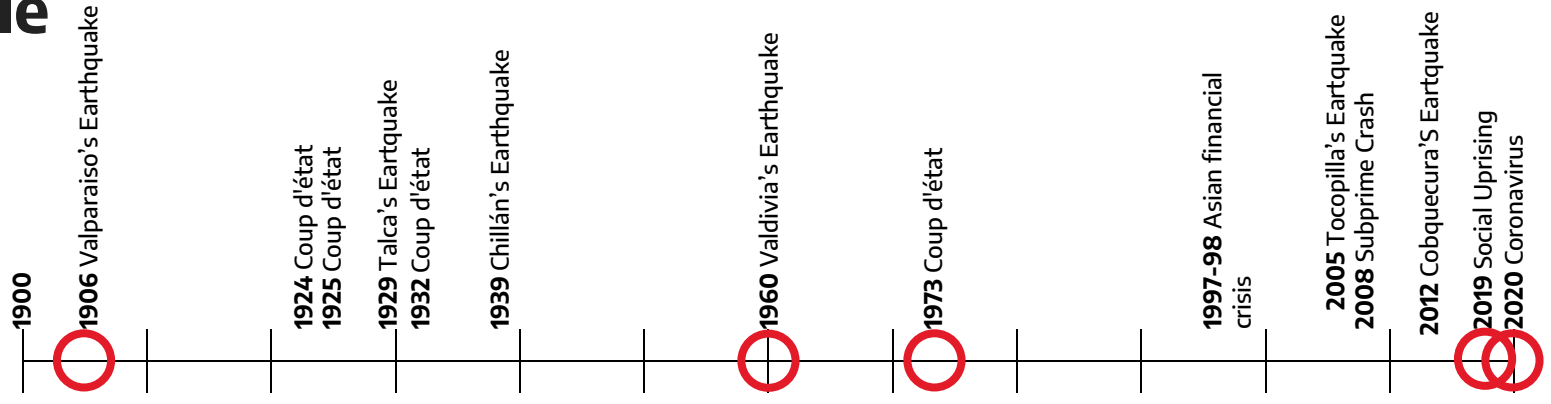
Volcanic eruptions

Fires

# USA



# Chile





# VALDIVIA'S EARTHQUAKE (May 22, 1960)



**9.5 MW**

**the most powerful instrumentally recorded in the history of humanity  
2,000 dead and more than two million victims (25% population)**



# POPULAR UNITY GOVERNMENT (1970 - 1973)



Stafford Beer  
Fernndo Flores  
Raúl Espejo

Nationalization of  
strategic companies

**Cybersyn**  
Chile's 'socialist internet'



# COUP D'ÉTAT (September 11, 1973)

- 17 years of dictatorship
- 28,459 tortured
- 2,125 killed
- 1,102 disappeared



**“The Chilean Miracle”:  
The neoliberal experiment**



# EARTHQUAKE AND TSUNAMI (February 27, 2010)

- Large-scale natural disasters reveal territorial vulnerabilities, the **lack of proper land use planning** and various forms of institutional rigidity.
- After the disaster of 2010, the Chilean central government showed **agility in putting place a program** covering a broad range of territories (239 municipalities and 23.000 settlements).
- The vast spatial demands of residential and urban facilities, **challenged traditional planning tools** and procedures.



# SOCIAL UPRISING (October 18, 2019)



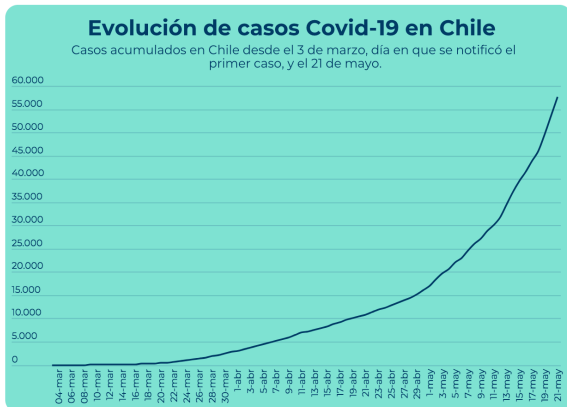
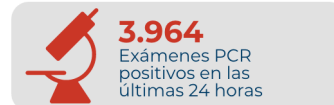
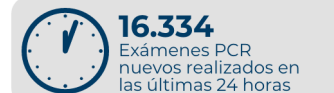


# SOCIAL UPRISING IN NEOLIBERAL CHILE



# CHILE DURING THE COVID CRISIS

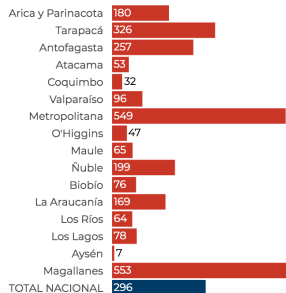
## Exámenes de PCR



**57,581 total cases**  
**3.538 new cases**  
**589 death**  
**2.2% population tested**  
**943 hospitalized**  
**1,912 ventilators**

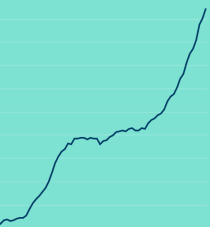
Los Lagos	693	13
Aysén	8	0
Magallanes	987	18

### Número de personas contagiadas por cada 100.000 habitantes



### Pacientes hospitalizados UCI

**943**  
datos al 21 de mayo



**148 pacientes críticos**  
datos al 21 de mayo

**VIERNES 22 DE MAYO**

**REPORTE COVID-19**

**CASOS NUEVOS 4.276**  
CON SÍNTOMAS **3.863** ASINTOMÁTICOS **413**

**CASOS TOTALES 61.857**  
RECUPERADOS **25.342**

**346** VENTILADORES DISPONIBLES  
**16.090** EXÁMENES PCR ÚLTIMAS 24 HRS  
**442.093** EXÁMENES PCR TOTALES

**61.857 CASOS Y 630 FALLECIDOS EN TOTAL**

**BUENOS DÍAS A TODOS** **4.276 NUEVOS CASOS Y 41 FALLECIDOS EN UN DÍA** **10:58**

TVN **VIVO** **COVID-19**

**2° 21°**

[@mybuenosdiasv](https://www.facebook.com/mybuenosdiasv/)

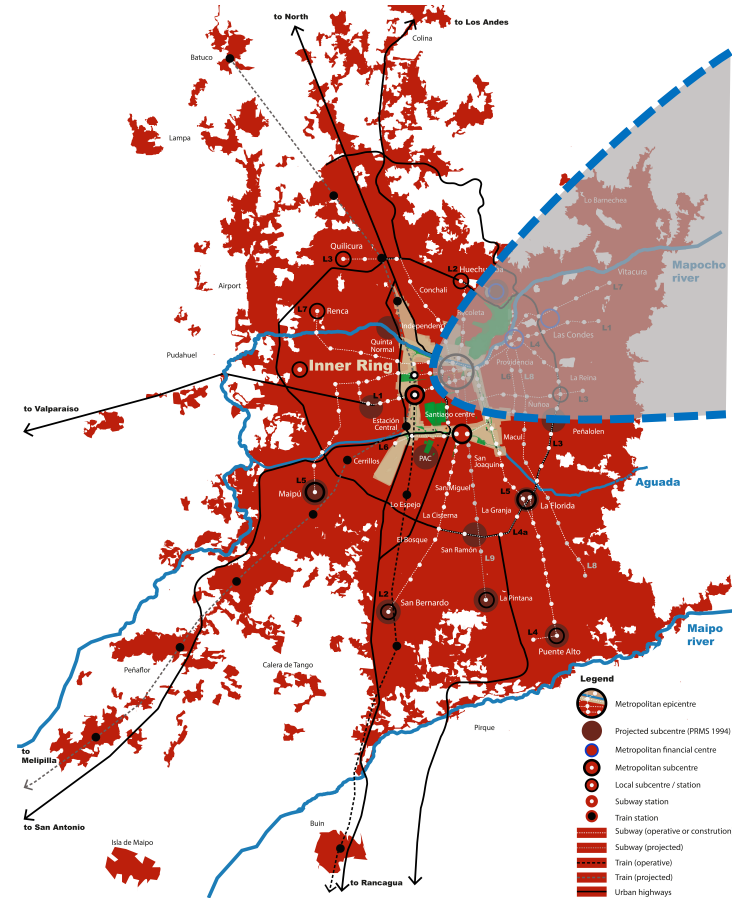
# CHILE DURING THE COVID CRISIS

## PERFORMANCE CONDITIONATED BY UNDERLYING RISK FACTORS

- Urban inequalities
- Urban vulnerabilities
- Governance failures
- Institutional distrust

## COMMON PATTERNS WITH SOCIAL UPRISING (OVERLAPPING FACTORS)

- Inequality
- Frustration
- Sensation of discrimination
- Public response with the use of police and military force
- Violence (physical, political, social, criminality, etc.)



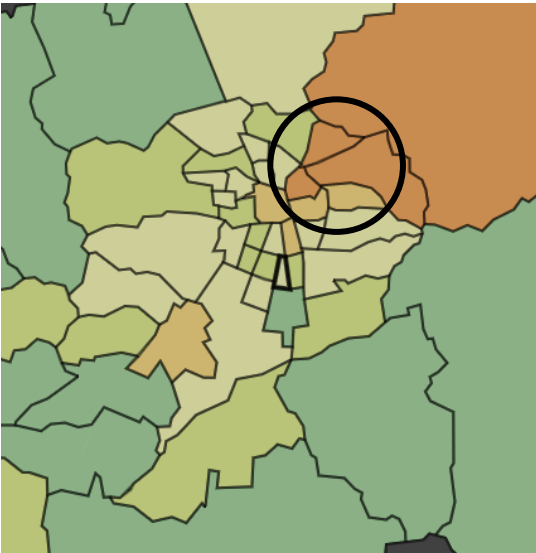


# STATE OF EXCEPTIONS

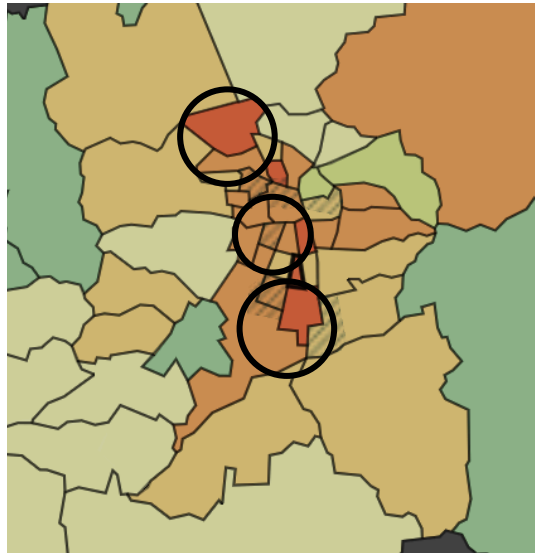
## FROM PARTIAL TO TOTAL LOCKDOWN

### Macroeconomics vs Health vs Microeconomics

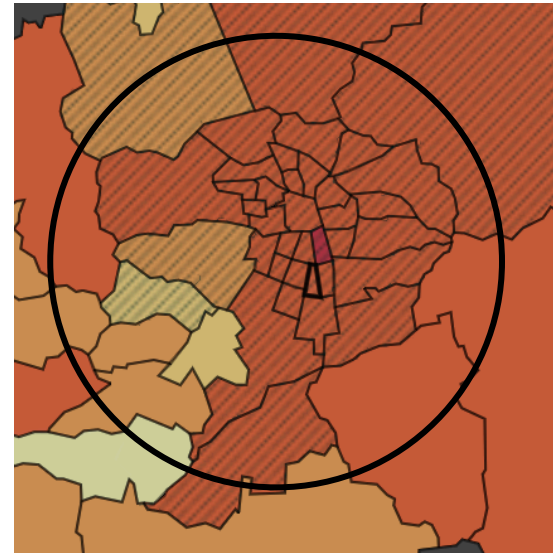
March 25 (Cases)



April 25 (Cases)



May 18 (Cases)





# STATE OF EXCEPTION(S)

## Repressing Hunger



## Evolving Crime

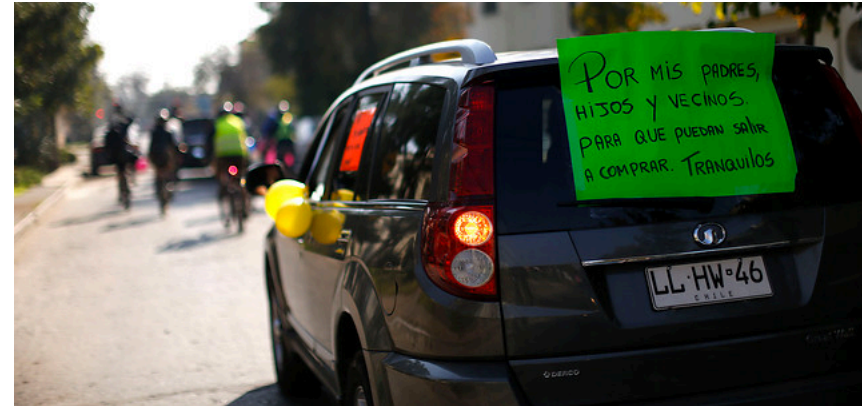
Insecure quarantine: 85% of municipalities perceive that crime has increased during the pandemic (El Mostrador, May 19, 2020)

Increase in crime:

Robbery with violence and intimidation 24%

Theft in an inhabited place 20.7%

Domestic violence 15.09%.



# Suzanne Hague, AICP Speaker



## Suzanne Hague, AICP

Former Deputy Director for Planning and Community Development  
California Governor's Office of Planning and Research (OPR)  
Sacramento, California



Your job encompasses a wide range of issues ranging from statewide housing and community development strategies to working with a variety of state, regional, and local governments on local hazards and disasters.

- Briefly, what does OPR do and how does COVID-19 affect housing, transportation, and land use planning?
- What are your greatest fears and hopes regarding the current pandemic in California?
- What are some specific roles and responsibilities planners should be undertaking to help our communities successfully adapt to the new normal?

# California's Plan to Re-open

## Step One: Lower Risk Workplaces



# Loosening “Stay at Home” Restrictions

## A Health Care Capacity-based Approach

- ✓ Are the total # of cases flat or decreasing?
- ✓ Are the # of hospitalized patients flat or decreasing?
- ✓ Is there enough PPE for healthcare workers?
- ✓ Are we meeting the need for testing?
- ✓ Do we have the capacity to perform contact tracing?

# State and Local Coordination

## New Restriction and Guidelines for Parks and Beaches

### A Risk-based Approach

- ✓ Hike in single file on a narrow trail
- ✓ Keep at least six feet apart from others
- ✓ Carry face coverings
- ✓ No large groups
- ✓ Some trails closed to bikes

# The California Statewide COVID-19 Clearinghouse

- ✓ It is important to stay up-to-date on the latest health information, state guidance, and available resources
- ✓ The Clearinghouse contains resources from a variety of state agencies, departments, and sources all in one site
- ✓ The Clearinghouse also includes links to local resources
- ✓ For more information: <http://opr.ca.gov/covid-19/>



Governor's Office of  
**Planning and Research**

# Miguel Angel Vazquez, AICP Speaker





## Miguel Angel Vazquez, AICP

Planners4Health Lead  
APA California  
Riverside, California



As a certified planner working for a public health department and Planners4Health coordinator, you are concerned with a wide range of issues that have been amplified by the COVID-19 crisis.

- How has the COVID-19 crisis disproportionately impacted people of color, the elderly, and the poor?
- What are your greatest fears and hopes regarding the current pandemic in California?
- What are some specific roles and responsibilities planners should be undertaking to help our communities successfully adapt to the new normal?

# The Issue is NOT the Issue

**Mistrust between blue collar workers and the urban elite is endemic**

Too often, it is about:

- Coastal versus inland
- College grads versus high school grads
- Country music versus Bluegrass music

It's about power and more, and about melanin

- Who controls the government, the economy, the culture and who doesn't

**We all need to pull together!**

# Serving Time

Should NOT BE an Automatically Death Sentence



<https://oehha.ca.gov/calenviroscreen/report/calenviroscreen-30>

# The Pandemic Magnifies Housing Crisis



Source: CBS News, Los Angeles

# Diana Benitez

## Speaker



## Diana Benitez

Intermediate Planner  
Raimi + Associates  
Oakland, California



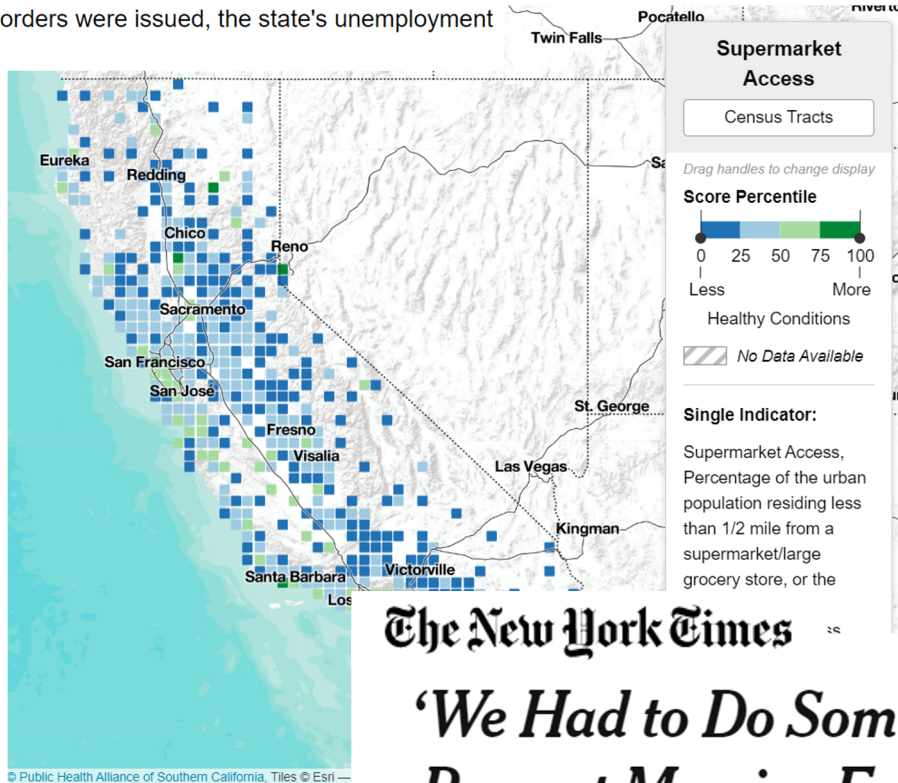
As a professional consultant and Planners4Health coordinator, you are concerned with a wide range of issues that have been amplified by the COVID-19 crisis.

- Can you provide examples applicable to the intersection of social equity, health and access to food, outdoor recreation and housing?
- What are some specific roles and responsibilities planners should be undertaking to help our communities successfully adapt to the new normal?



# Coronavirus crisis: Hundreds of thousands of Californians may not be receiving unemployment benefits, federal data shows

In February, before stay-at-home orders were issued, the state's unemployment rate was only about 4%.



The New York Times

*'We Had to Do Something': Trying to Prevent Massive Food Waste*

# Here's a list of grocery stores in SoCal opening early for seniors, other vulnerable groups during the coronavirus outbreak



LADOT to install food pick-up parking zones for restaurants affected by COVID-19.

## Actions

- **Flexible Zoning:** lifting noise restriction loading/unloading, curbside pick-up
- **Essential Businesses:** farmers markets, farm and produce stands, nurseries
- **Local restaurants** selling basic goods and fresh groceries
- **Free public transit**
- **Federal Government** purchasing \$300M surplus vegetables each month for food banks

## Concerns

- **Not supporting all small businesses** like street vendors

# People crowd Southern California beaches despite coronavirus concerns



By [Dakin Andone](#) and [Paul Vercammen](#), CNN

Updated 4:02 PM ET, Mon April 27, 2020



Beachgoers on in Huntington Beach, California, on 25 April. Photograph: Apu Gomes/AFP via Getty Images

## CORONAVIRUS

# Crowds fill Fresno County parks despite COVID-19 closure



By Christina Lopez

Sunday, April 5, 2020



**Heather Knight** ✓  
@hknightsf



Major props to @presidiosf for closing its golf course and turning it over to kids, families, walkers and joggers during shelter-in-place. Plenty of space for social distancing. So much valuable land in our city is set aside for golfing. Why?



606 8:55 PM - Apr 26, 2020



**Dave Campbell**  
@Derailluer

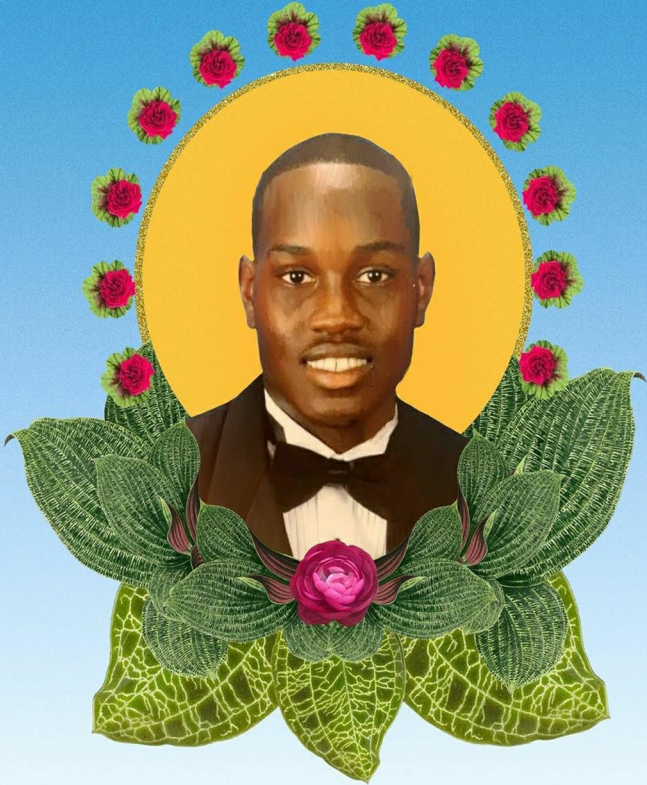


Checked out #OaklandSlowStreets in north Oakland today. In the 2nd photo, notice how far in front of his parents the kid on scooter is allowed to roam



3:57 PM · May 3, 2020 · Twitter for iPhone





## Actions

- **Opening parks and beaches** for active uses
- **Street closures** for pedestrian and bike access

## Concerns

### Open Space

- **Parks in wealthier neighborhoods** opening up first
- **Lack of park access** for working class and communities of color

### Open Streets

- Some prefer to **prioritize emergency response and access**
- **Black and Brown people** do not feel safe in public spaces
- **Need community input** to determine if community needs and wants the service



broobs.psd



SCHOOL OF PUBLIC HEALTH

COVID-19 pandemic highlights longstanding health inequities in U.S.

**HEALTH IN ALL POLICIES**



**Planning for Equity Policy Guide**

Approved by APA Delegate Assembly, April 14, 2019  
Ratified by APA Board of Directors, May 14, 2019

[planning.org/policy](http://planning.org/policy)

# LA City DASH Buses Now Free to Ride Amid Coronavirus Outbreak

## Global Map of Covid-19 Emergency Tenant Protections & Rent Strikes →

**COVID-19 Emergency Tenant Protections & Rent Strikes**

▼ About the map:

**Emergency Tenant Protections**

Where United States officials have passed (or tenants are working to pass) emergency tenant protections during the COVID-19 crisis.

[Submit a tenant protection update](#)

Anti-Eviction Mapping Project

## Lessons

- **Act Fast** for Critical Responses to help vulnerable populations
- **Move Slowly** on big decisions
- **Continue virtual engagement** to gather community input
- **Continue Health Equity** work with Healthy and all Policies and Equity in all Policies approaches

State/territory ▾	State of emergency declared ▾	Stay at home ordered ▲
<b>Puerto Rico</b>	March 12	March 15
<b>California</b>	March 4	March 19



**David Silva**  
**Lessons from**  
**PLANRED's international conversations**



# COVID CONVERSATIONS : THE ITALIAN EXPERIENCE

Bianca Caravati & Cristina Visconti

March 26, 2020



- A need to communicate and engage in social relationships feels pressing
- Public spaces are closed with police control
- A mixed city where basic services are the neighborhood level allows to keep alive social relations

- Planning: Improving governance in local governments is needed
- Risk management are super important & the intersectoral approach to disasters is crucial



# COVID CONVERSATIONS : THE MEXICAN EXPERIENCE

Domingo Arteaga, Myriam Urzua & Rodrigo Díaz

April 2, 2020



- Poor groups are very concerned about their economic future & health
- The authority has only advised to stay at home
- Health brigades have been deployed to deliver packages of basic items & services

- Planning: resilience capacities of cities & their populations are being tested and also how the installed urban capacities have been able to respond
- Risk management: Mexico has had many disasters in history: climate disasters + health disasters + earthquake disasters



# COVID CONVERSATIONS : THE BRITISH EXPERIENCE

Bernardita Devilat , Camila Cociña & Juan Pablo Corral  
April 8, 2020



- The government's response was late and faulty → At first, they bet on the hypothesis of universal immunity
- The approach was changed & the focus was placed on quarantine + message to people to stay home



- City planning has helped to cope with the crisis → The importance of social infrastructure services (NHS) available @ a short distance for daily life
- In greater London, mayors and local governments seem to act together in networks of local governance





# COVID CONVERSATIONS : THE GERMAN EXPERIENCE

Paola Alfaro, Lorena Valdivia, Álvaro Valera & Vicente Sandoval

April 17, 2020



- German approach: confidence in the State and science
- The people trust the German State → Merkel's speech has given a message of care & safety to people
- Scientists are trusted → There were 500,000 weekly tests

- The people trust the German State → It's a compromise → Merkel's speech has given a message of care & safety to people
- Planning: to defend the provision of a good health system at an intermediate scale
- Rethinking the city & the uses of public spaces



# Paola Alfaro

## Outlook for Germany



## Paola Alfaro-d'Alençon

Deutsche Forschungsgemeinschaft (DFG)  
Research Fellow / Assoc. Prof. Dr. Ing.  
Technische Universität Berlin

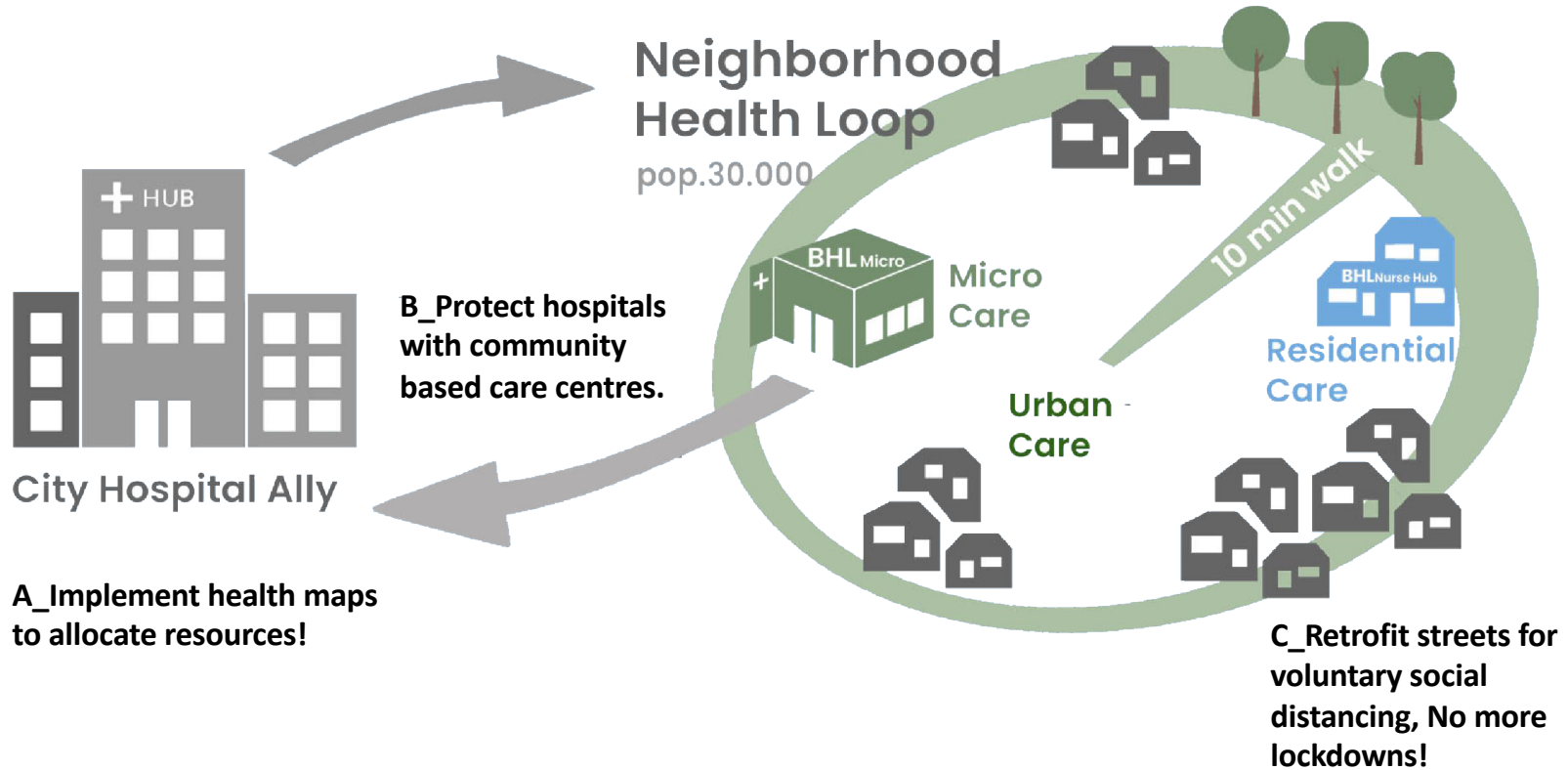


Representing the rest of the speakers who participated in the meeting on April 17 (Lorena Valdivia, Alvaro Valera and Vicente Sandoval) would like to know their vision regarding the German experience with COVID.

- Tell us about the evolution of the crisis in Germany. Is it possible to define phases and lessons?
- As planners what role are we currently playing and could we play as planning discipline (built environment discipline) in the context of pandemic?



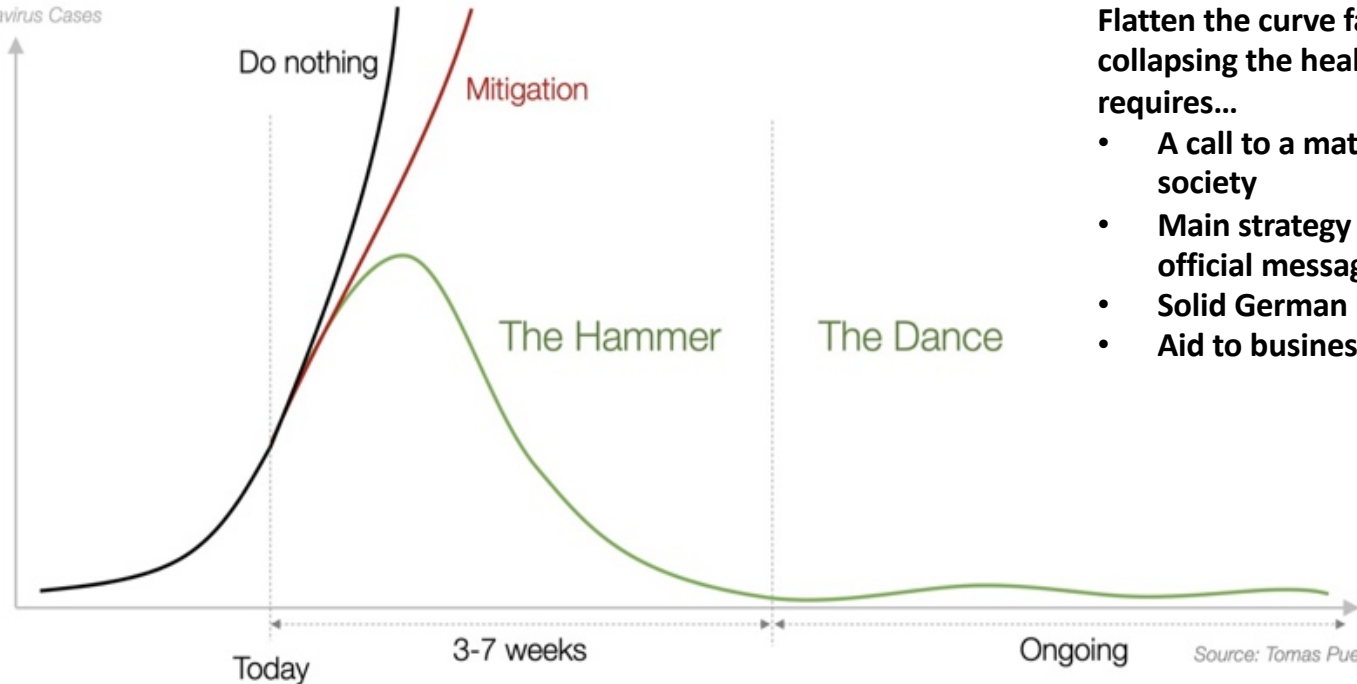
# By Álvaro Valera Sosa



# “SCIENCE OVER POLITICS IN FIGHTING THIS CORONAVIRUS”

By Lorena Valdivia Steel

Coronavirus Cases



German approach:

“buying time by spending a lot of money”

Flatten the curve fast to avoid collapsing the health system, requires...

- A call to a mature democratic society
- Main strategy to send clear official messages massively
- Solid German health system
- Aid to businesses of all sizes

Source: Tomas Pueyo

# By Lorena Valdivia Steel

Scientists high credibility

Merkel's speech was key

Standing up for science!



# “THE LOCKDOWN’S HEALTH AND ECONOMIC LOSSES”

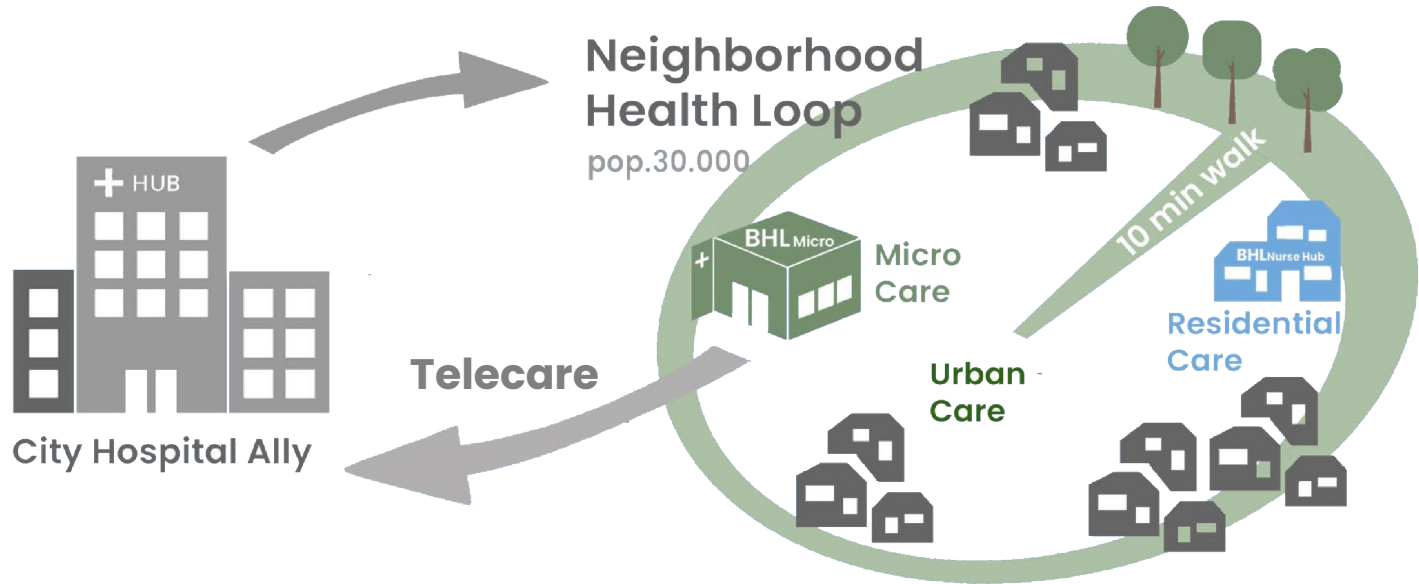
By Álvaro Valera Sosa

**Systematic planning could have avoided:**

- (i) hospital networks from depleting its resources;**
- (ii) Healthcare staff from risk of contagion & exhaustion;**
- (iii) population suffering impacts of a lockdown**

**Three strategies we support.....**

# By Álvaro Valera Sosa



**A\_** Implement health maps to optimize resource allocation!

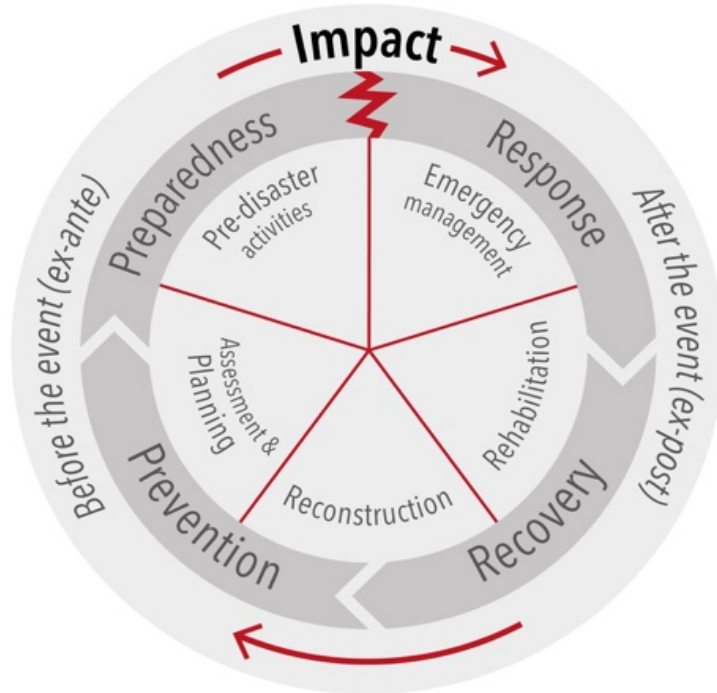
**B\_** Protect hospitals with community based care centres. Tailor care facilities for each community

**C\_** Retrofit streets for voluntary social distancing. No more lockdowns!

# “DEFINED PHASES TOWARDS THE COVID EMERGENCY”

By Vicente Sandoval

The disaster risk management cycle



- **Preparedness measures were implemented** assessment of PPE availability and Covid19 tests capabilities.
- **The response phase** was characterized by social distancing and movement restrictions (i.e., at neighborhood, city, intercity, regional, and Intl. levels). Some cities, like Berlin, never reached a lockdown situation....
- **Rehabilitation phase** started by the end of April. Still running, it encompasses a slow but progressive (sometimes named de-escalated) return to a new normality.



# By Vicente Sandoval

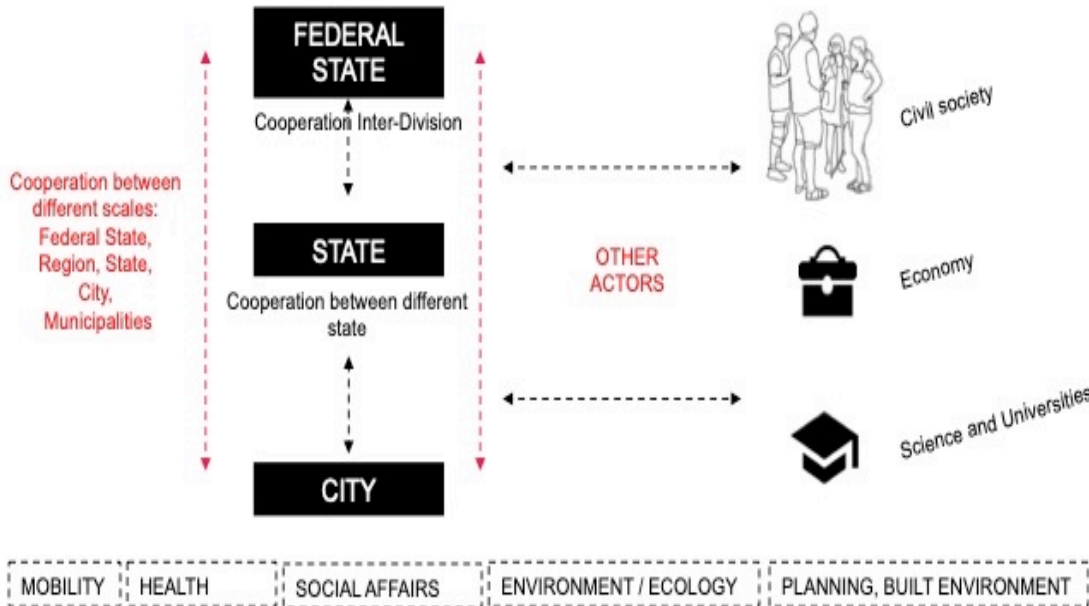


>> **May 4 in Berlin**, educational centres resumed their activities but with strict measures such as only 15 students per classroom and distanced by 2 meters between tables ....



# “SUSTAINABLE DEVELOPMENT STRATEGY BATTLING THE CORONAVIRUS”

By Paola Alfaro-d’Alençon



(i) Public responsive and consensual actions

(ii) Risk-Adapted Strategy gradual transition to a **risk-based strategy** → **Corona Task Force (CTF)**

- Multiscalar
- Process based
- Multi-actors approach (inter- and transdisciplinary)

Die Ansätze einer integrierten nationalen Stadtentwicklungspolitik  
(Integrative urban development approach)

# “SUSTAINABLE DEVELOPMENT STRATEGY BATTLING THE CORONAVIRUS”

By Paola Alfaro-d’Alençon

- Interdisciplinary knowledge production



Die Ansätze einer integrierten nationalen Stadtentwicklungspolitik  
(integrative urban development approach)

WHITE PAPER

## Der Corona- Effekt

Vier Zukunftsszenarien

zukunftsInstitut

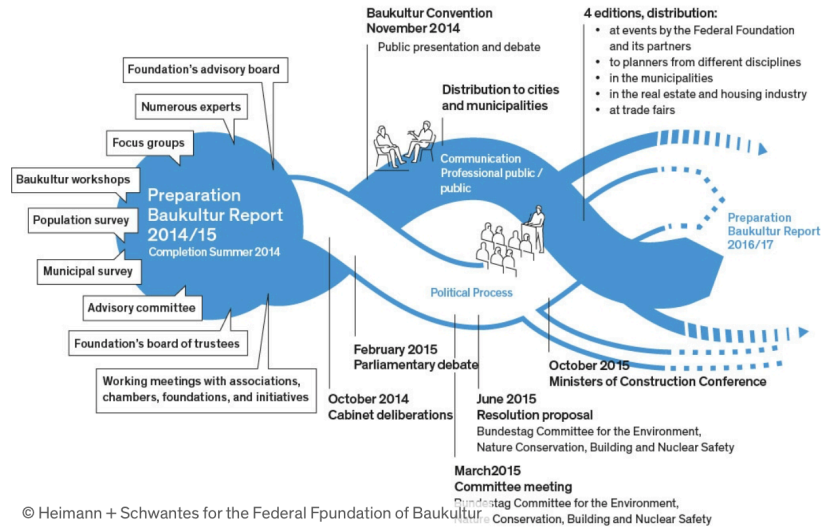
Zukunftsinstitut GmbH  
Internationale Gesellschaft für Zukunfts- und Trendberatung  
Kaiserstr. 53  
60329 Frankfurt am Main

Presse  
Tel: +49 69 2648489-24  
presse@zukunftsinstitut.de

# By Paola Alfaro-d'Alençon

- Interdisciplinary knowledge production

## Status reports on the situation of Baukultur in Germany



© Till Budde für die Bundesstiftung Baukultur

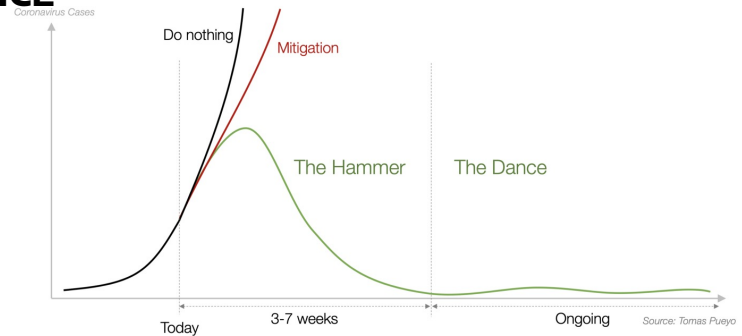


# COVID CONVERSATIONS : THE GERMAN EXPERIENCE

## Lorena Valdivia Steel

### Reflections: Science over politics in fighting this coronavirus.

German approach: "buying time by spending a lot of money".  
Flatten the curve fast to avoid collapsing the health system.



**A call to a mature democratic society**, which values freedom and trusts the State: Confinement laid on individual responsibility, clear rules and controls were implemented.

**Main strategy was to send clear official messages massively** with great transparency from scientific agencies to control panic, counteract fake news, and build trust in the government.

**Solid German health system:** compulsory medical insurance; most intensive care beds in the EU; strong pillar for population's health and well-being. Multilingual health hotlines are available with official translators if needed.

**Scientists have high credibility:** The Robert Koch Institute leads communications daily

**Aid to businesses of all sizes** including freelancers with emphasis on culture and arts. The largest and fastest relief package in post-war history.

**Merkel's speech was key in reassuring people:** "this is the biggest challenge since the end of the 2nd war".

This is not only a health crisis, but an economic one. Can't suggest staying home without offering economic aid.

**Standing up for science!** Scientific community is called to communicate data and models for decision-making. - -

Dilemma: Some governments downplayed the pandemic remaining inoperative; thousands suffered or died.

Other governments took harsh measures despite criticism. Germany: Better to overstate than staying inoperative!

If it's about money: Effects of pandemics can be more expensive than shutdowns!

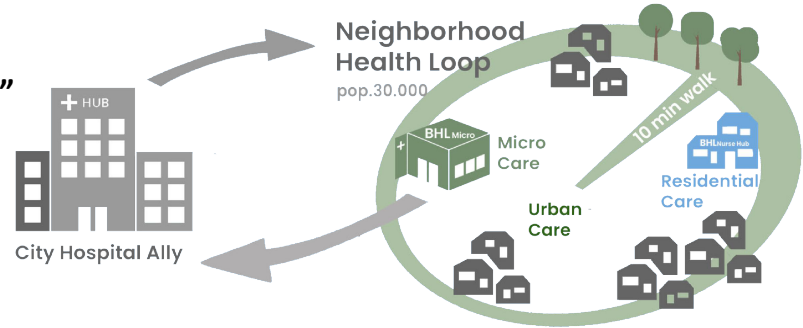
# COVID CONVERSATIONS : THE GERMAN EXPERIENCE

## Álvaro Valera Sosa

### Reflections: “The lockdown’s health and economic losses”

Systematic planning could have avoided:

- (i) hospital networks from depleting its resources;
- (ii) healthcare staff from risk of contagion and exhaustion;
- (iii) population suffering the impacts of a lockdown



### Three strategies we support

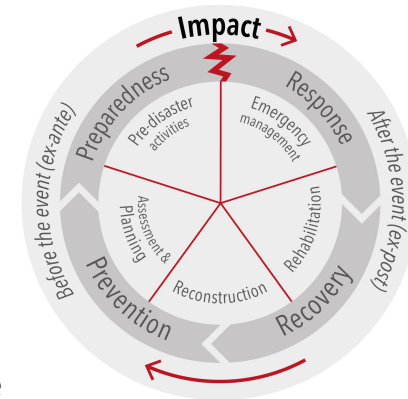
**Implement health maps.** These web-based platforms consolidate data and real-time information from all healthcare stakeholders to understand, prepare, respond, and recover from the impacts of disasters. Architects and the response supply chain are informed about specific location, needs, and requirements to deploy solutions that attend the emergency while protecting hospital resources and capacity.

**Tailor integrated care facilities for each community.** Most health providers (offices) don't deliver coordinated care despite the multiple connected health technologies available. This lack of integration generates a fragmented medical landscape of economic waste and poor quality of care where patients suffer multiple trips, accumulative waiting times, information loss or duplicity, etc. and end up in hospitals. Diseases should be contained and tackled locally, in one place, with a holistic care approach and using telediagnosics of large hospitals when needed.

**Retrofit streets for voluntary social distancing, no more lockdowns!** Streets and other public spaces must be designed for inclusion especially of slow groups (elderly, children, and people with disabilities). Ensure: (i) space allocation (sufficient path width); (ii) connectivity, continuously paved pedestrian networks to services and facilities; (iii) quality walking experience (factors and variables for pedestrian safeness, comfort, and satisfaction).

# COVID CONVERSATIONS : THE GERMAN EXPERIENCE

## Vicente Sandoval



### Reflections: Defined phases towards the Covid19 emergency

Preparedness and early warning,

Response

Rehabilitation

**German government established a Task-Force** in early January to watch the

ongoing epidemic/pandemic situation in China, and concluded that Germany would be hardly affected.

**Preparedness measures were implemented.** These include: assessment of PPE availability and Covid19 tests capabilities. The first case occurred in Bavaria on 27 January and an around week later initiated local transmission of the virus.

**The response phase** was characterized by social distancing and movement restrictions (i.e., at neighborhood, city, intercity, regional, and Intl. levels). Some cities, like Berlin, never reached a lockdown situation, but strict measures were imposed over shops, restaurants, and events, while strong recommendations were given to the population, including: stay at home, go out only when is necessary, 2 meters distance between people, not more than 2 persons in public spaces –only family groups when these living under the same roof–, among others.

**The Rehabilitation phase** started by the end of April. Still running, it encompasses a slow but progressive (sometimes named de-escalated) return to a new normality. On May 4 in Berlin, educational centres resumed their activities but with strict measures such as only 15 students per classroom and distanced by 2 meters between tables –this implied that not all courses and ages were allowed to return at the same time. Likewise, urban mobility measures include mandatory use of masks in public transport and supermarkets.



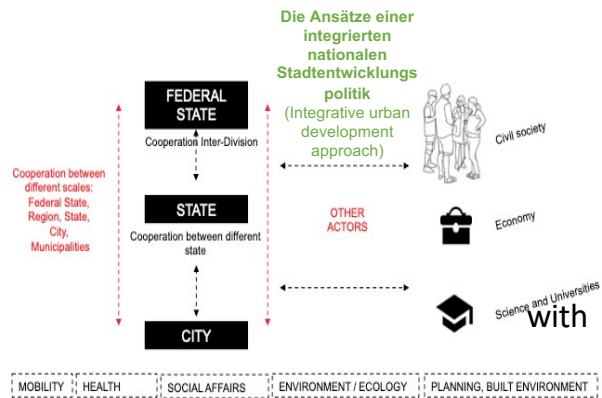
# COVID CONVERSATIONS : THE GERMAN EXPERIENCE

## Paola Alfaro – d'Alençon

### Reflections: “Sustainable Development Strategy in battling the Coronavirus”

#### (i) Public responsive and consensual actions

Public budget: 1 543 Mrd. € Incoming / 1497 Mrd. € Funding (2019)  
 v/s 7.5 percent of GDP (approx. 150-260 billion euros)  
 one month shutdown (2020)



#### (ii) Risk-Adapted Strategy gradual transition to a risk-based strategy → Corona Task Force (CTF)

**Multiscalar.** Nationwide as well as regional opportunities and threats. CTF consists of national task force, based at federal government and regional structures with its levels in close contact. Purpose: collect relevant information required to flexibilize controls in individual steps and tasks

**Process based.** Differentiated step-by-step plan to design, prepare and initiate targeted adjustments to concrete measure packages differed by regions, groups of people, areas of social life and economic sectors

**Multi-actors approach (inter- and transdisciplinary).** Experts for various objectives work together with representatives of societal group to prepare the political decision-making process and to accompany and communicate the implementation of these decisions

**Interdisciplinary knowledge production.** Essential to provide recommendations on governance models, instruments to impacts sectoral integration since Coronavirus is is a cross-cutting issue that calls for an intensive coordination of different actors and administrative as well as private sectors, public actions and the availability of financial resources for the implementation of concrete measures

[www.covidconversaciones.cl](http://www.covidconversaciones.cl)







American Planning Association  
**California Chapter Northern**

*Making Great Communities Happen*

## Webinar Disclaimer

This disclaimer applies to any APA California Webinar and any documents, information or opinions obtained from or ancillary to the Webinars. You are advised to read this disclaimer carefully before accessing, participating in, reading or making any other use of a APA California Webinar. APA California makes no representations or warranties about the accuracy or suitability of information provided in the Webinars and related materials (such as hand-outs, presentation documents and recordings). The information contained in the Webinars and related materials are not intended to constitute advice of any kind or the rendering of consulting, or other professional services. Registering for a Webinar only constitutes an agreement to attend, not a contract for consultancy or advice. Registration does not establish any contractual relationship with APA California. You should consult with an attorney, consultant or other professional to determine what may be best for your individual needs. The opinions expressed in a Webinar are those of the speaker(s) only, and may not necessarily represent the views of APA California, National APA or any local section. To the extent permitted by law, APA California and its agents and experts exclude any and all liability for any loss, claim or damage, cost or expense, including any indirect or consequential damages or lost profit, whether arising in negligence or otherwise, suffered in connection with the access to, participation in, or use of the Webinar by you or any other person. By acceding to this service, you acknowledge that the information and materials contained in the Webinar may contain inaccuracies or errors. The content of the information provided in the Webinar is for your general information and use only. It is subject to change at any time and without notice. The Webinar may include links to other resources or websites. These links are provided for your convenience only and do not signify that APA California endorses, approves, or makes any representation or claim regarding the accuracy, copyright compliance, legality, or any other aspects of, the resource(s) or website(s). Further, you are advised not to send any confidential or sensitive information to APA California in the context of a Webinar.